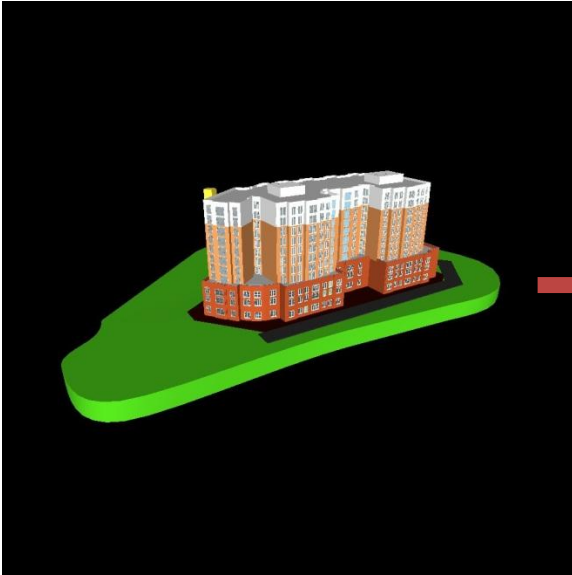


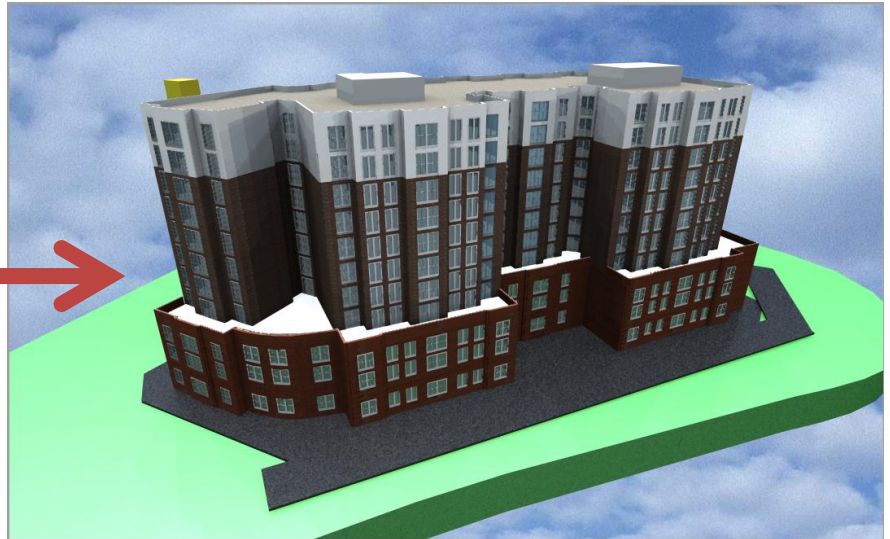
## Navisworks Manage 2011: Using “Presenter” Tool

A feature within Navisworks Manage 2011 called “Presenter” allows for improved rendering of the building within the software. Utilizing the features allows for higher quality presentations and overall imagery of the building. The image below on the left is an example of a texture-less building mass without a scenic backdrop.

Without Presenter



With Presenter



### Steps

- 1.) Load your models into Navisworks 2011 Manage.
- 2.) Within the home screen, click “Presenter” located within the Tools ribbon.
- 3.) Within Presenter, there are the following tabs: Materials, Lighting, RPC, Effects, Rendering, Texture Space and Rules.
  - a. **Material Tab:** Here you can add textures to objects that were originally “colored masses.”
    - i. Within the material tabs, are folders with numerous materials. To apply them to a building element, first drag them from the respective folder into the white space to the right.
    - ii. Next, drag the texture onto the element of the building as desired.
    - iii. This feature is useful for both interior and exterior elements.
  - b. **Lighting Tab:** Here you can add additional lighting elements such as environmental, exterior, interior and sky.
    - i. Similar to the material tab, drag the lighting element to the right, and then drag onto the model.
  - c. **RPC Tab:** This is useful for adding people, shrubs and trees.
  - d. **Effects:** This is useful for adding features such as the sky background seen in the rendering
  - e. **Rendering:** This is useful for creating different style renderings as needed for the specific project.
- 4.) When the following presenter tools have been used, you can click the “Render” button at the bottom of Presenter, for a more realistic view of the building which includes shadows and improved textures.